

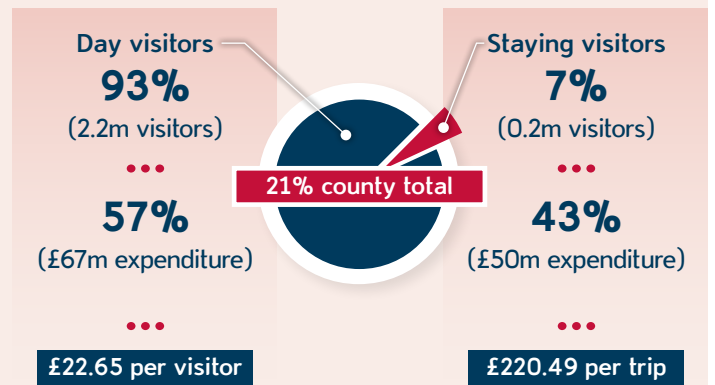
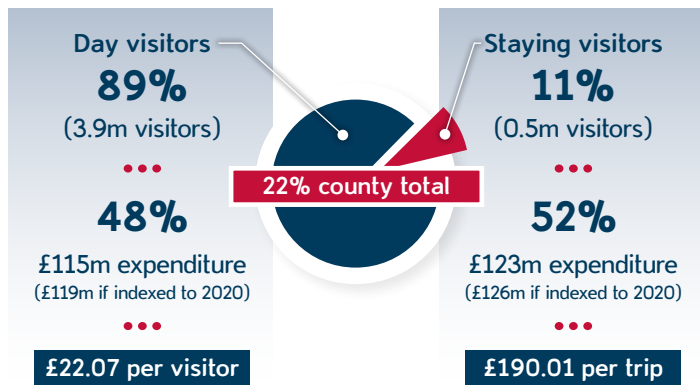
# Impact of Covid-19 on Durham's Sub Regional Visitor Economy

2019 2020

## City of Durham

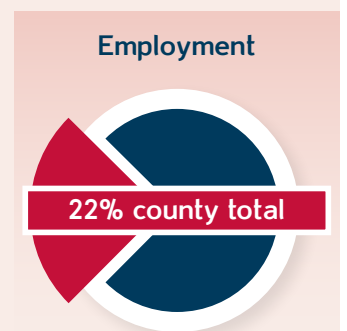
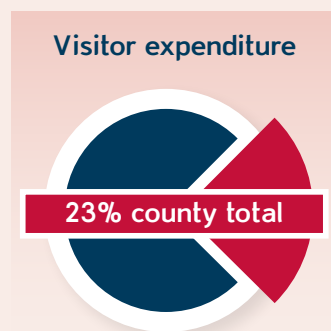
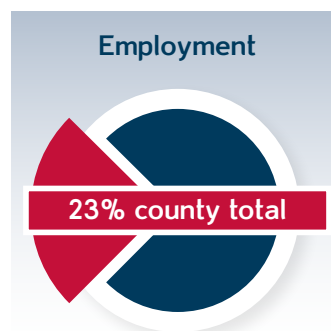


## Visitors



Total visitor days = **4.9m**  
Total staying visitor nights = **1.1m**

Total visitor days = **2.6m**  
Total staying visitor nights = **0.4m**



Average length of stay – 1.14 days  
Average length of staying visitor – 2.24 days

Average length of stay – 1.09 days  
Average length of staying visitor – 2.5 days

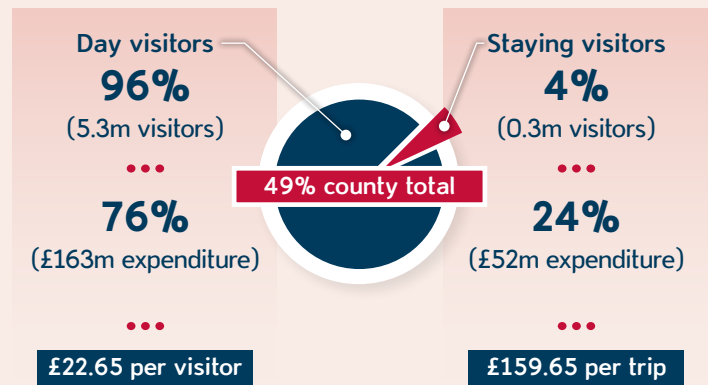
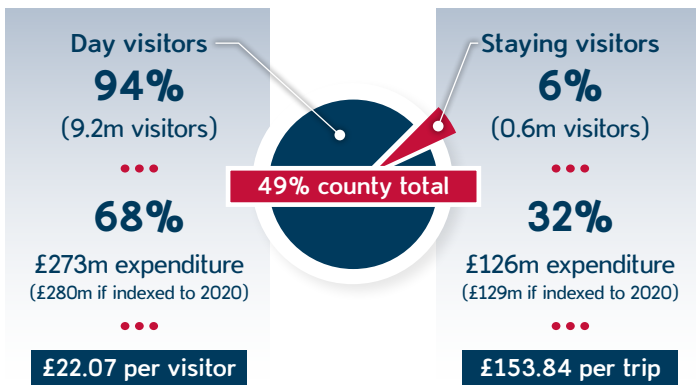
2019

2020

## Vale of Durham

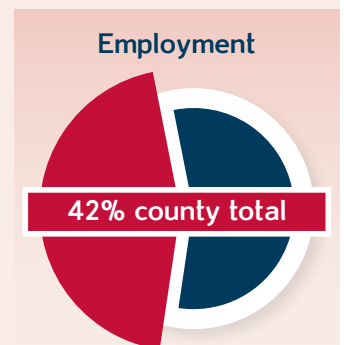
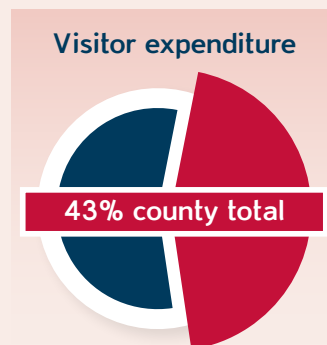
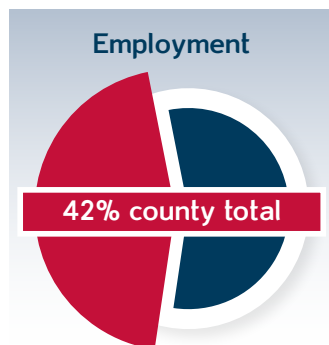
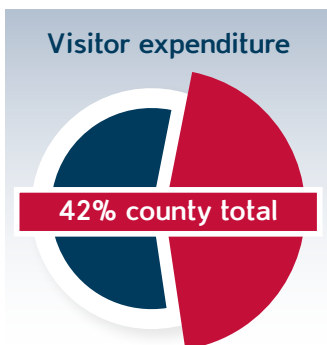


## Visitors



Total visitor days = **10.6m**  
Total staying visitor nights = **1.5m**

Total visitor days = **5.9m**  
Total staying visitor nights = **0.6m**



Average length of stay – 1.09 days  
Average length of staying visitor – 2.37 days

Average length of stay – 1.06 days  
Average length of staying visitor – 2.4 days

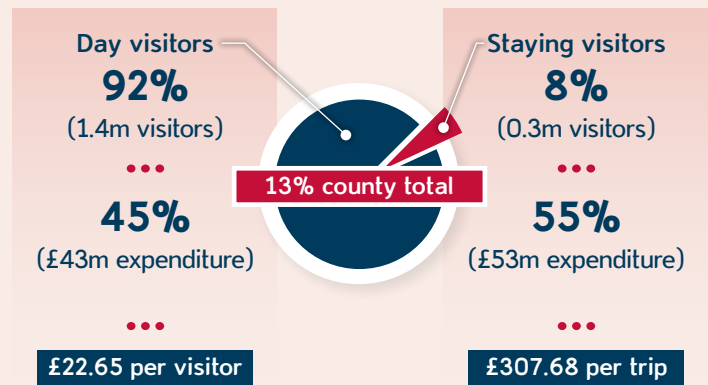
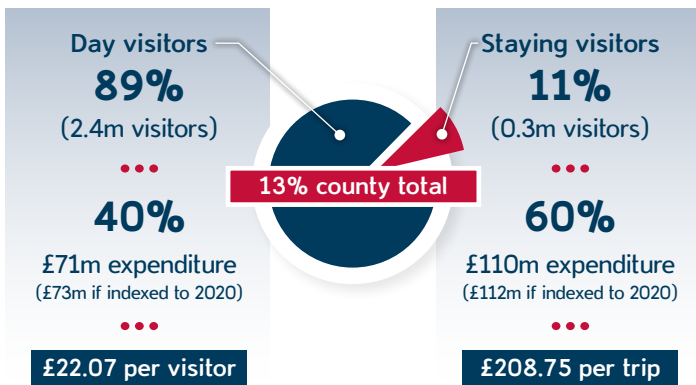
2019

2020

## Durham Dales

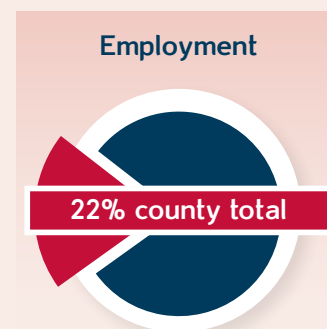
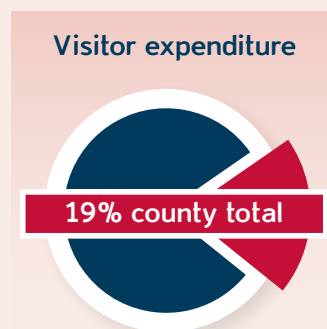
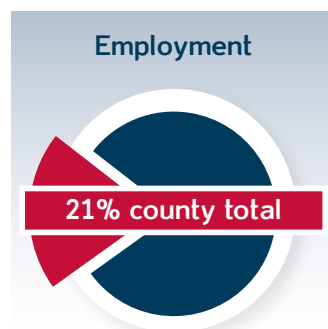


## Visitors



Total visitor days = **3.52m**  
Total staying visitor nights = **1.13m**

Total visitor days = **1.93m**  
Total staying visitor nights = **0.53m**



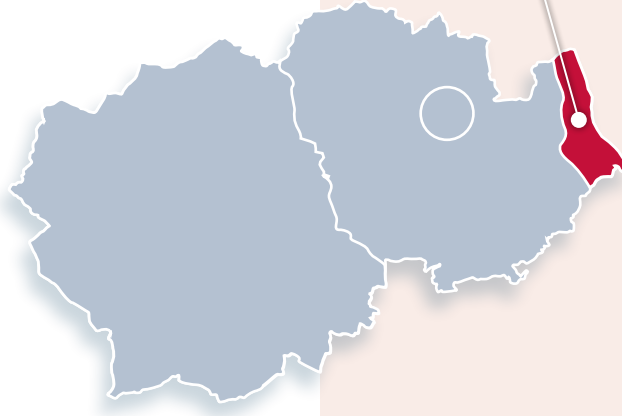
Average length of stay – 1.3 days  
Average length of staying visitor – 3.86 days

Average length of stay – 1.26 days  
Average length of staying visitor – 4.08 days

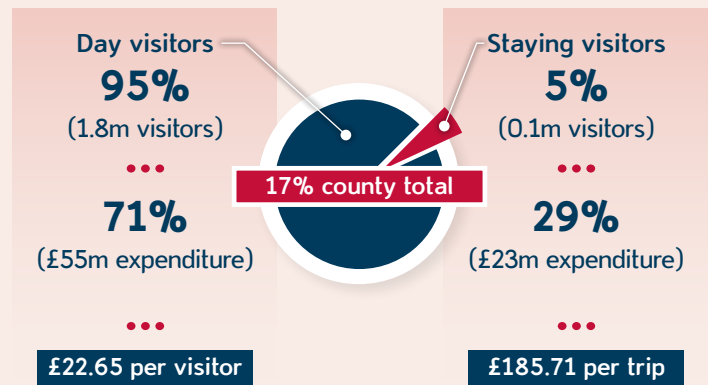
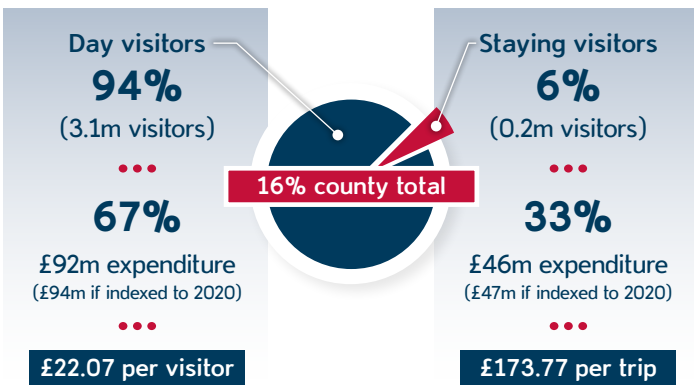
2019

2020

## Durham Coast

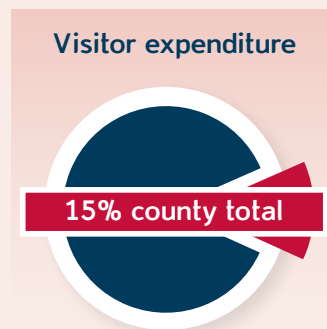
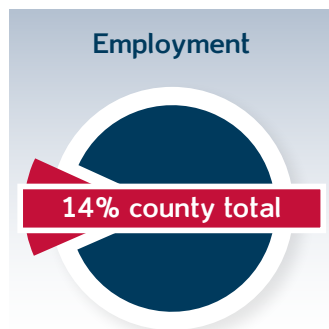


## Visitors



Total visitor days = **3.66m**  
Total staying visitor nights = **0.57m**

Total visitor days = **2.07m**  
Total staying visitor nights = **0.27m**



Average length of stay – 1.1 days  
Average length of staying visitor – 2.84 days

Average length of stay – 1.09 days  
Average length of staying visitor – 3 days